

Color Temperature:



Total Lumen Output:
21194 lm

Light Quality:

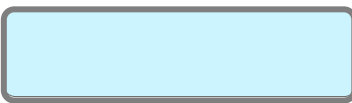


Peak:
1128539 cd

Light Efficiency:



Power: 793 W



CIE 1931
x: 0.308
y: 0.320

Test: Narrow

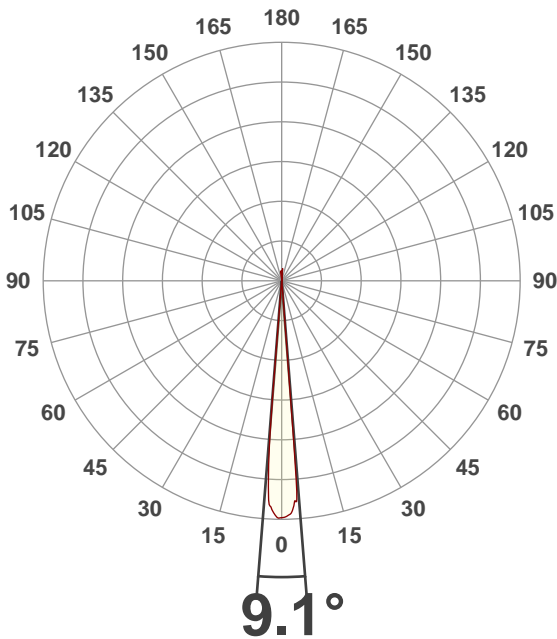
Date: 4/27/2018

Voltage: 116 V
Current: 6.82 A
Frequency: 60 Hz

CRI: 72.7
CQS: 68.9
TM30: 69.0

Note:

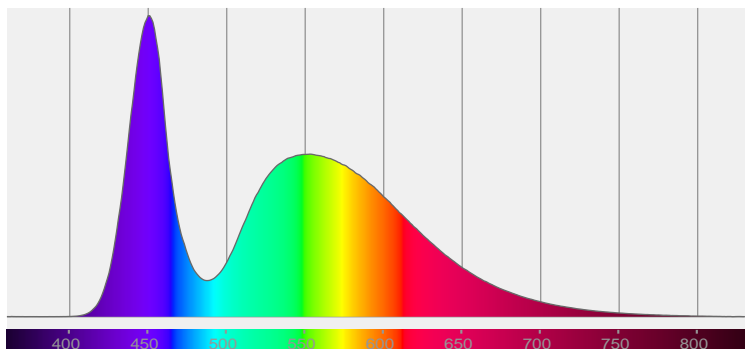
Beam Angle



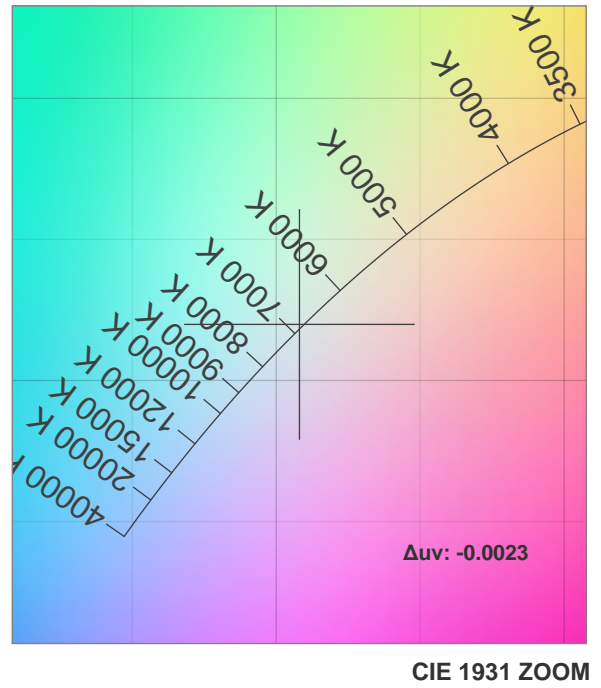
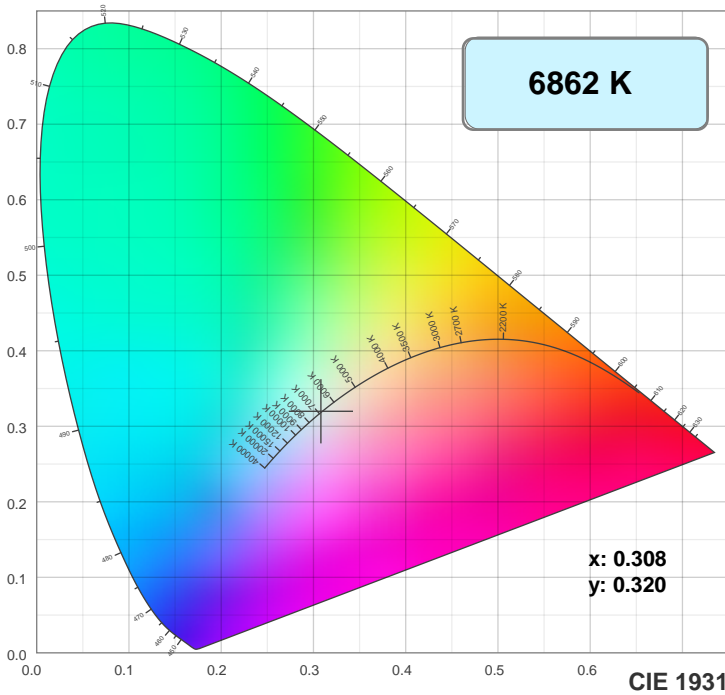
Beam Angle 50%	Field Angle 10%	Cutoff Angle 2.5%
9.1°	10°	10.6°

Spectra

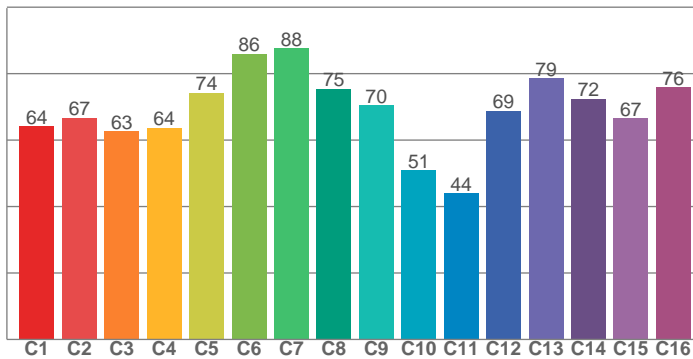
Dominant Wavelength: 451nm



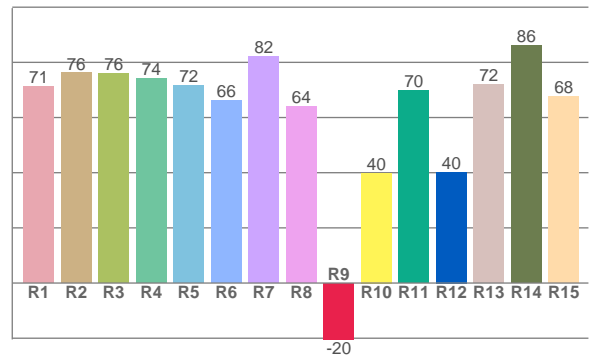
Color Details



TM30: 69.0



CRI: 72.7 (R1-R8)



CRI R values, only R1-R8 are used to calculate final CRI value

R1	R2	R3	R4	R5	R6	R7	R8	R9	R10	R11	R12	R13	R14	R15
71.3	76.2	75.9	74.0	71.6	66.2	82.2	64.0	-20.4	39.9	69.9	40.3	71.8	86.2	67.7

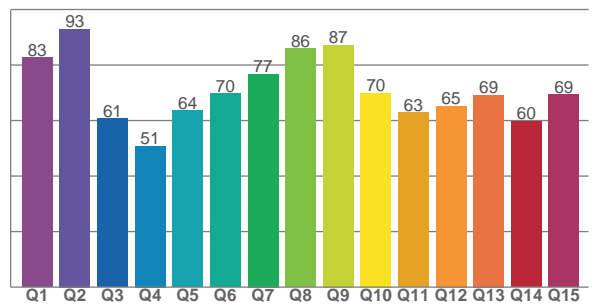
TM30 C Values, 16 binned values out of total of 99 C values

C1	C2	C3	C4	C5	C6	C7	C8	C9	C10	C11	C12	C13	C14	C15	C16
64.1	66.7	62.6	63.7	74.2	85.9	87.6	75.4	70.4	50.9	44.0	68.7	78.6	72.4	66.6	75.8

CQS Q Values

Q1	Q2	Q3	Q4	Q5	Q6	Q7	Q8	Q9	Q10	Q11	Q12	Q13	Q14	Q15
82.7	92.9	60.7	50.9	63.5	69.7	76.8	86.0	87.2	70.0	62.9	65.2	69.2	59.7	69.3

CQS: 68.9



Color Parameters

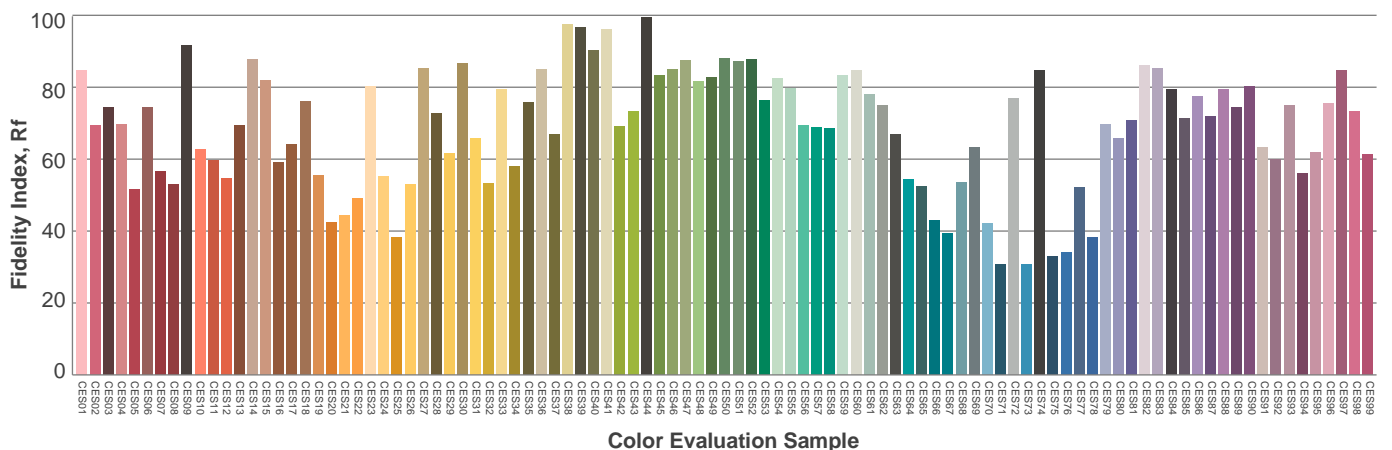
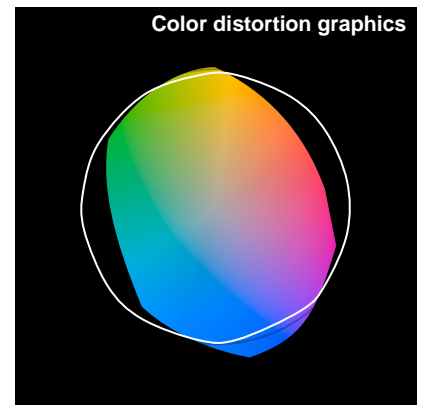
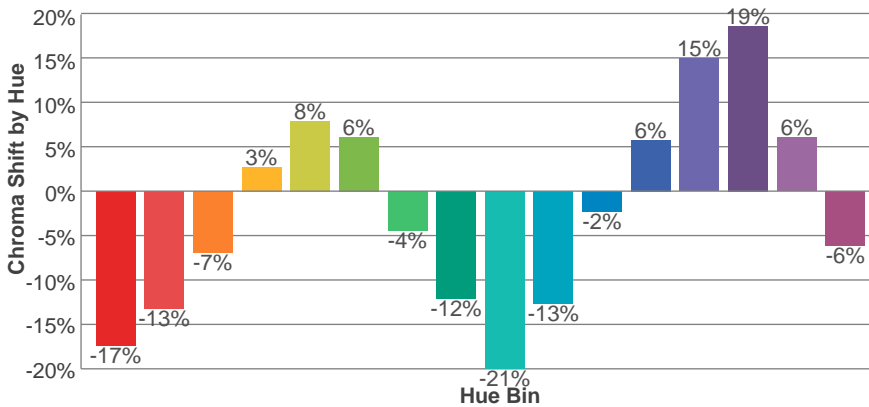
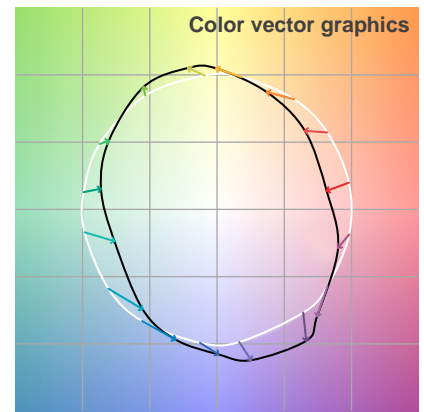
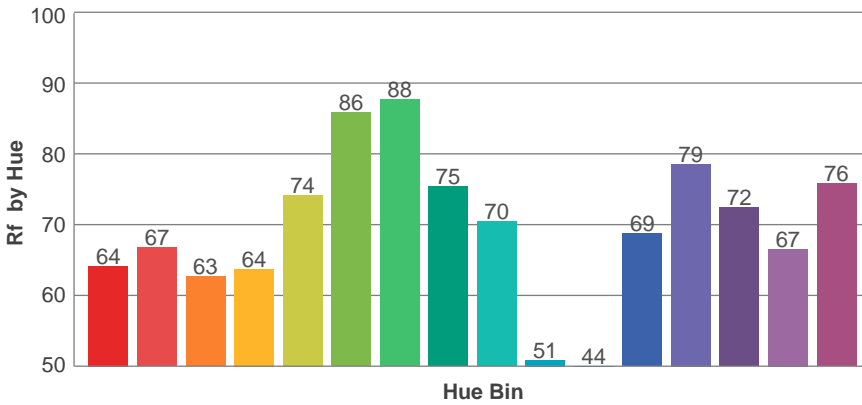
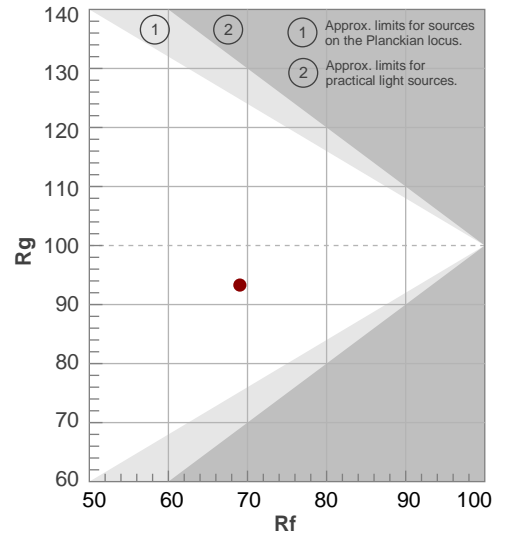
Color Temperature	Color Rendering Index	Red Component	Color Fidelity	Color Gamut	Color Quality Scale	Color Coordinate CIE 1931	Color Coordinate CIE 1931	Color Coordinate	Color Coordinate	Color Deviation from Black Body
CCT	CRI	CRI R9	TM30 Rf	TM30 Rg	CQS	x	y	u	v	Δuv
6862 K	72.7	-20.4	69.0	93.3	68.9	0.308	0.320	0.198	0.308	-0.0023

TM30 Details

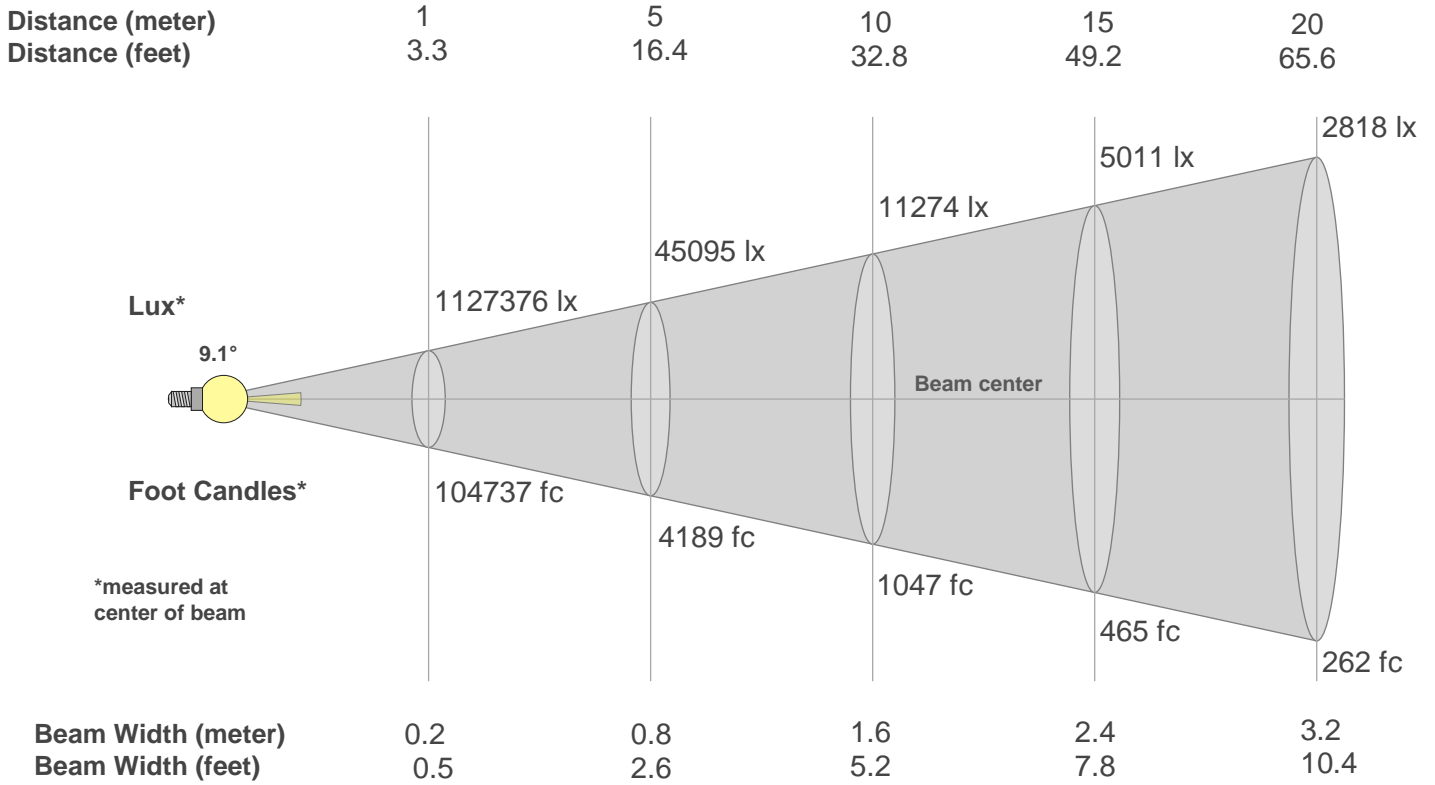
Rf 69.0
Fidelity Index Rf

Rg 93.3
Gamut Index Rg

Hue Bin	R _f	Graphic shifts (%)	
		Chroma	Hue
1	64	-17%	-3%
2	67	-13%	10%
3	63	-7%	20%
4	64	3%	20%
5	74	8%	11%
6	86	6%	-3%
7	88	-4%	-6%
8	75	-12%	-5%
9	70	-21%	11%
10	51	-13%	27%
11	44	-2%	28%
12	69	6%	15%
13	79	15%	6%
14	72	19%	-10%
15	67	6%	-23%
16	76	-6%	-11%



Beam Details



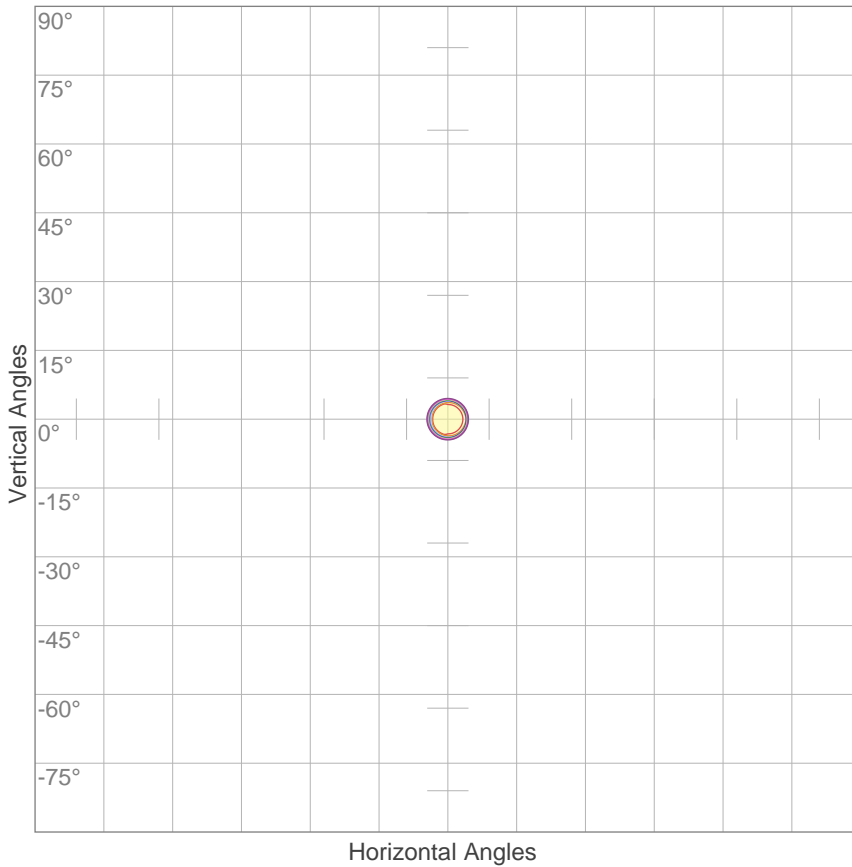
Beam Intensities from 1-20m

m	1	2	3	4	5	6	7	8	9	10	11	12	13	14	15	16	17	18	19	20
ft	3.3	6.6	9.8	13.1	16.4	19.7	23	26.2	29.5	32.8	36.1	39.4	42.7	45.9	49.2	52.5	55.8	59.1	62.3	65.6
lx	1127376	281844	125264	70461	45095	31316	23008	17615	13918	11274	9317	7829	6671	5752	5011	4404	3901	3480	3123	2818
fc	104736.6	26184.2	11637.4	6546	4189.5	2909.4	2137.5	1636.5	1293	1047.4	865.6	727.3	619.7	534.4	465.5	409.1	362.4	323.3	290.1	261.8

Beam Angle 50%	Field Angle 10%	Cutoff Angle 2,5%	Intensity Ratio in 120° Cone	Intensity Ratio in 90° Cone
9.1°	10°	10.6°	100.0%	100.0%

ISO Diagrams

ISO Candela Diagram



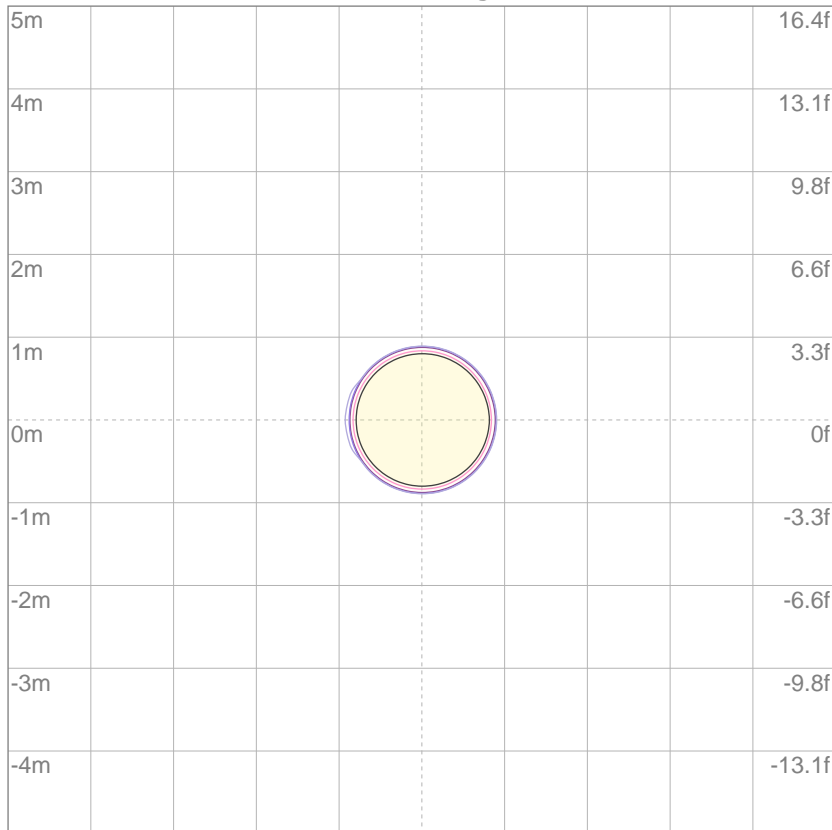
10%	112738 cd
20%	225475 cd
30%	338213 cd
40%	450950 cd
50%	563688 cd
60%	676425 cd
70%	789163 cd
80%	901901 cd
90%	1014638 cd

Conditions:

Number of c-planes: 2

Candela at center: 1127376 cd

ISO Lux Diagram



3%	338 lx
5%	564 lx
10%	1127 lx
30%	3382 lx
50%	5637 lx

Conditions:

Number of c-planes: 2

Lux at center: 11.3K lx

Lux distribution on a surface when lamp is mounted at 10 meters from the surface.

Color Temperature:



Total Lumen Output:
22466 lm

Light Quality:

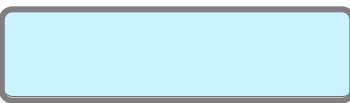


Peak:
42784 cd

Light Efficiency:



Power: 797 W



CIE 1931
x: 0.307
y: 0.320

Test: Wide

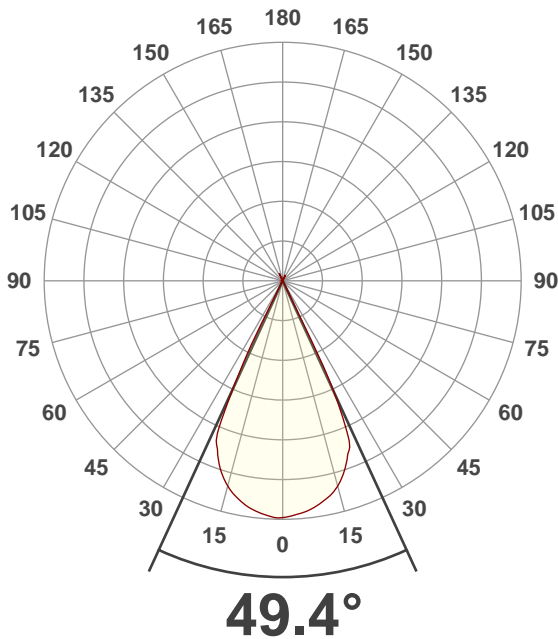
Date: 4/27/2018

Voltage: 116 V
Current: 6.85 A
Frequency: 60 Hz

CRI: 72.6
CQS: 68.9
TM30: 69.1

Note:

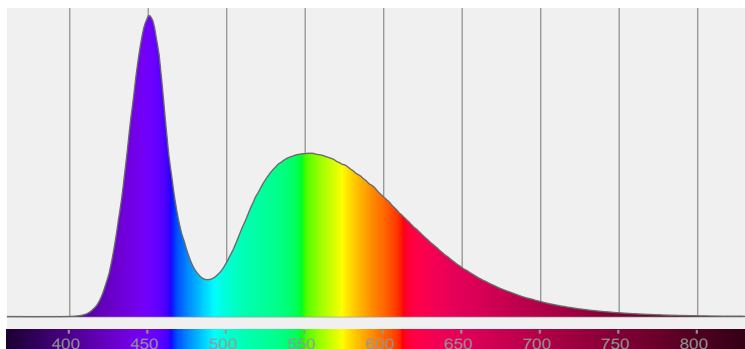
Beam Angle



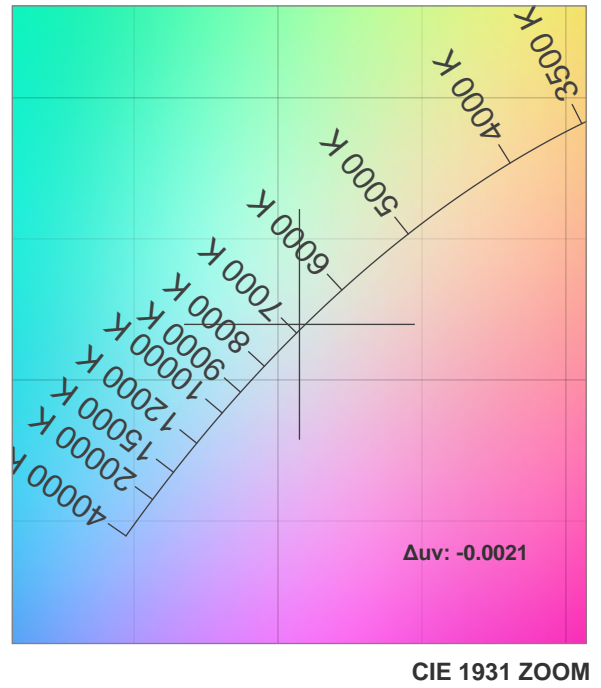
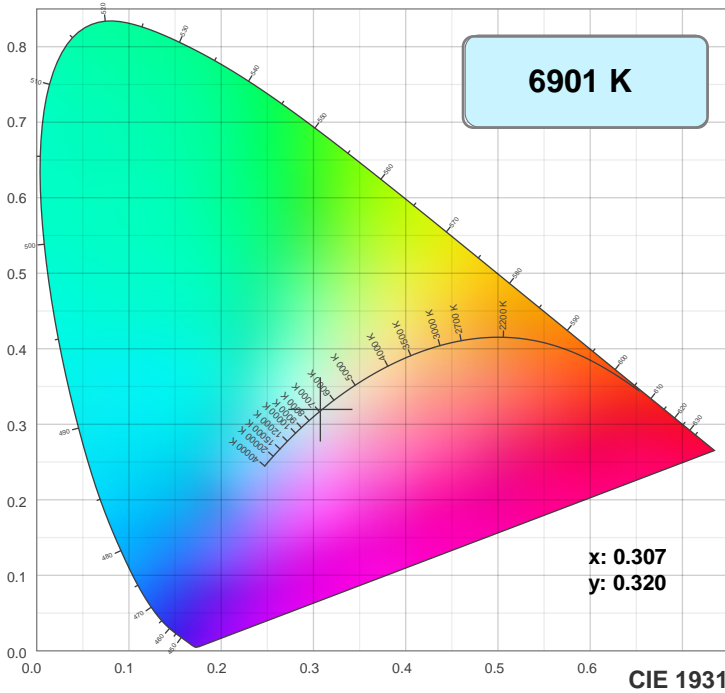
Beam Angle 50%	Field Angle 10%	Cutoff Angle 2.5%
49.4°	54.7°	55.7°

Spectra

Dominant Wavelength: 460nm

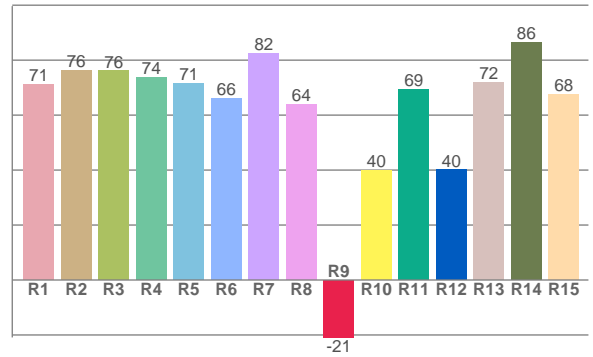
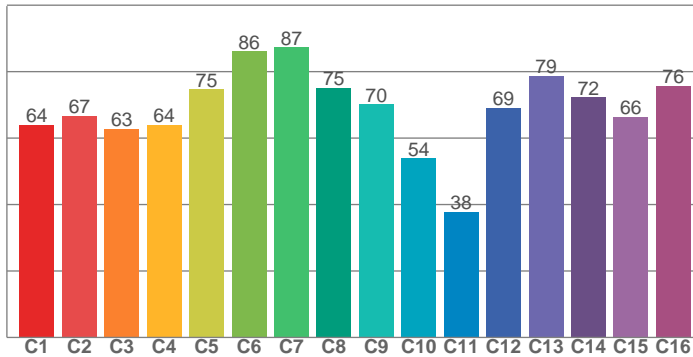


Color Details



TM30: 69.1

CRI: 72.6 (R1-R8)



CRI R values, only R1-R8 are used to calculate final CRI value

R1	R2	R3	R4	R5	R6	R7	R8	R9	R10	R11	R12	R13	R14	R15
71.1	76.2	76.1	73.8	71.4	66.1	82.3	63.9	-20.9	39.9	69.4	40.1	71.7	86.3	67.6

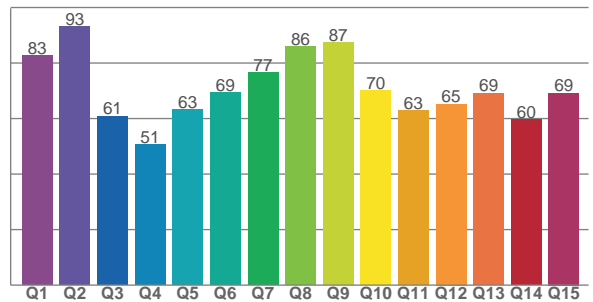
TM30 C Values, 16 binned values out of total of 99 C values

C1	C2	C3	C4	C5	C6	C7	C8	C9	C10	C11	C12	C13	C14	C15	C16
63.9	66.7	62.8	64.0	74.6	86.1	87.3	75.1	70.1	53.9	37.9	69.1	78.7	72.2	66.4	75.7

CQS Q Values

Q1	Q2	Q3	Q4	Q5	Q6	Q7	Q8	Q9	Q10	Q11	Q12	Q13	Q14	Q15
82.7	93.1	60.8	50.6	63.2	69.3	76.6	85.8	87.4	70.1	62.9	65.2	69.1	59.6	69.2

CQS: 68.9



Color Parameters

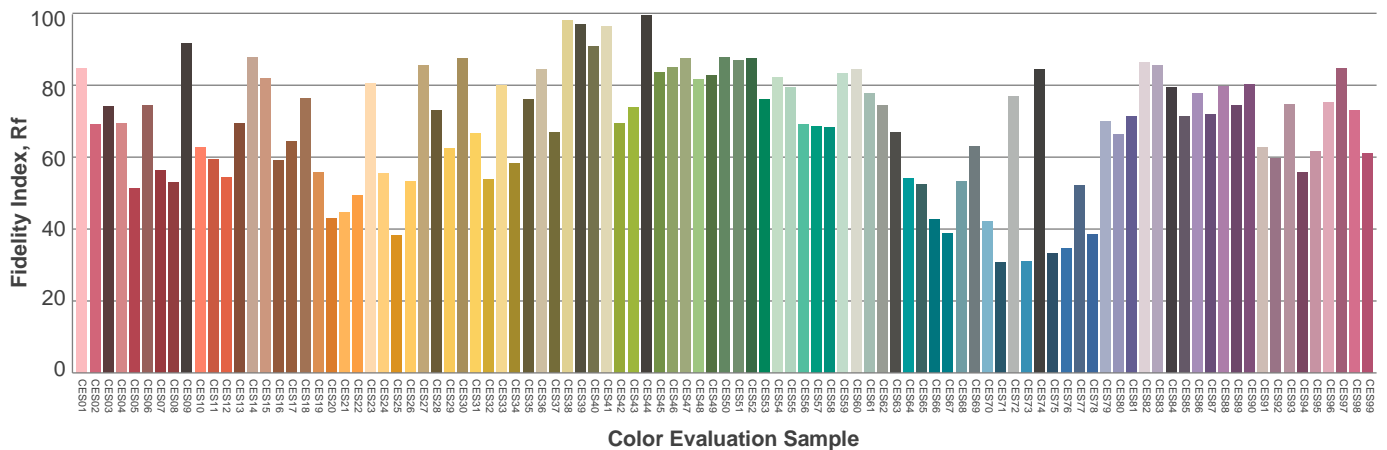
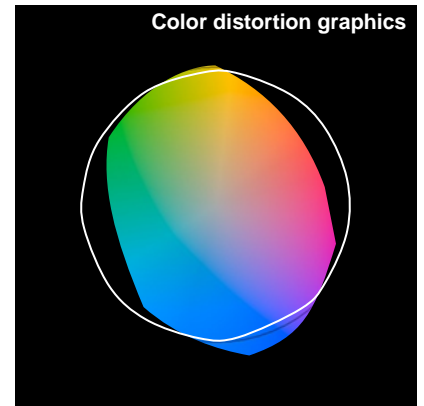
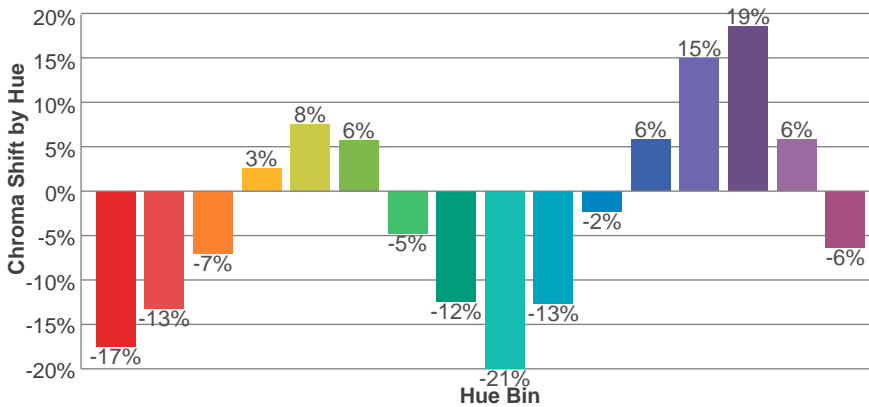
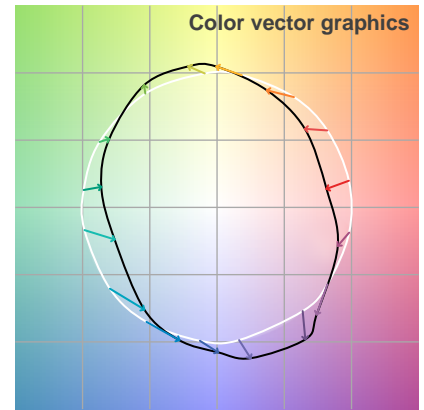
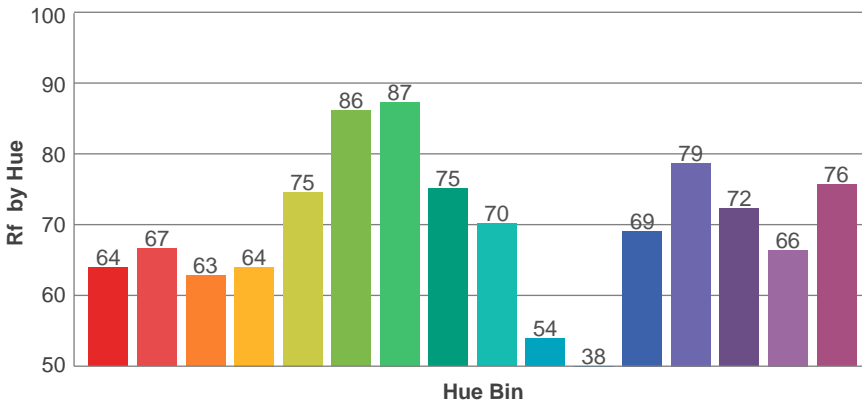
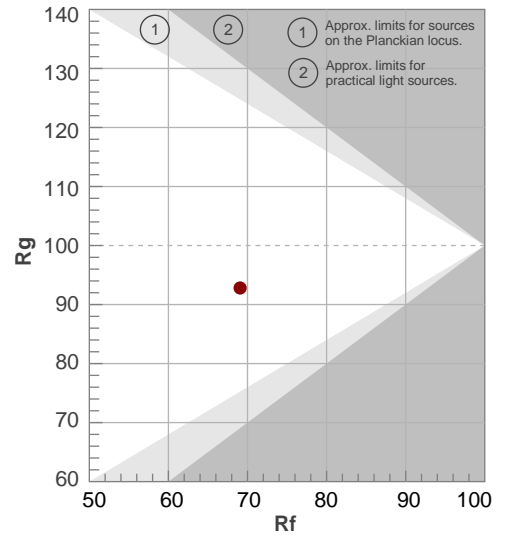
Color Temperature	Color Rendering Index	Red Component	Color Fidelity	Color Gamut	Color Quality Scale	Color Coordinate CIE 1931	Color Coordinate CIE 1931	Color Coordinate	Color Coordinate	Color Deviation from Black Body
CCT	CRI	CRI R9	TM30 Rf	TM30 Rg	CQS	x	y	u	v	Δuv
6901 K	72.6	-20.9	69.1	92.8	68.9	0.307	0.320	0.198	0.308	-0.0021

TM30 Details

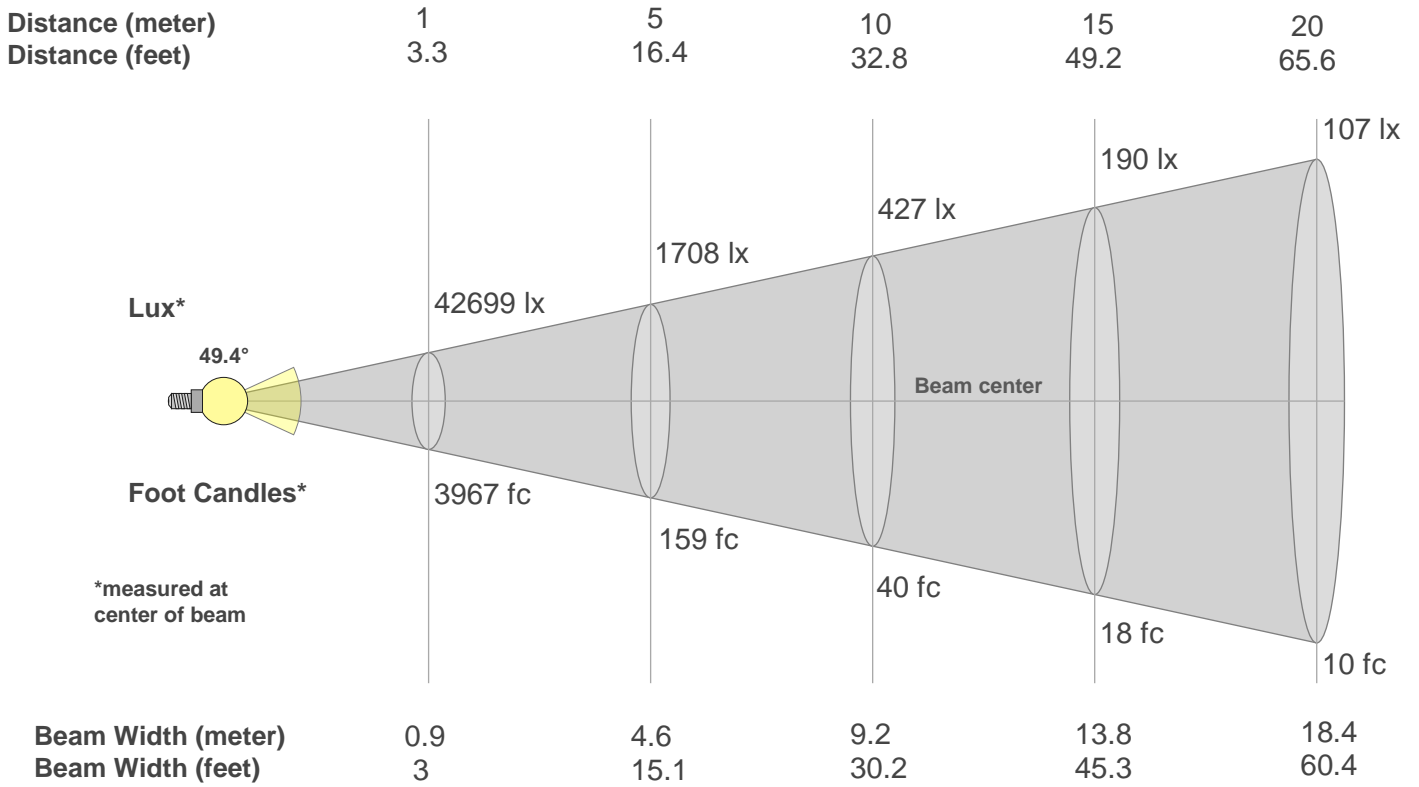
Rf 69.1
Fidelity Index Rf

Rg 92.8
Gamut Index Rg

Hue Bin	R _f	Graphic shifts (%)	
		Chroma	Hue
1	64	-17%	-3%
2	67	-13%	10%
3	63	-7%	19%
4	64	3%	20%
5	75	8%	11%
6	86	6%	-3%
7	87	-5%	-6%
8	75	-12%	-5%
9	70	-21%	11%
10	54	-13%	27%
11	38	-2%	28%
12	69	6%	15%
13	79	15%	6%
14	72	19%	-10%
15	66	6%	-23%
16	76	-6%	-11%



Beam Details



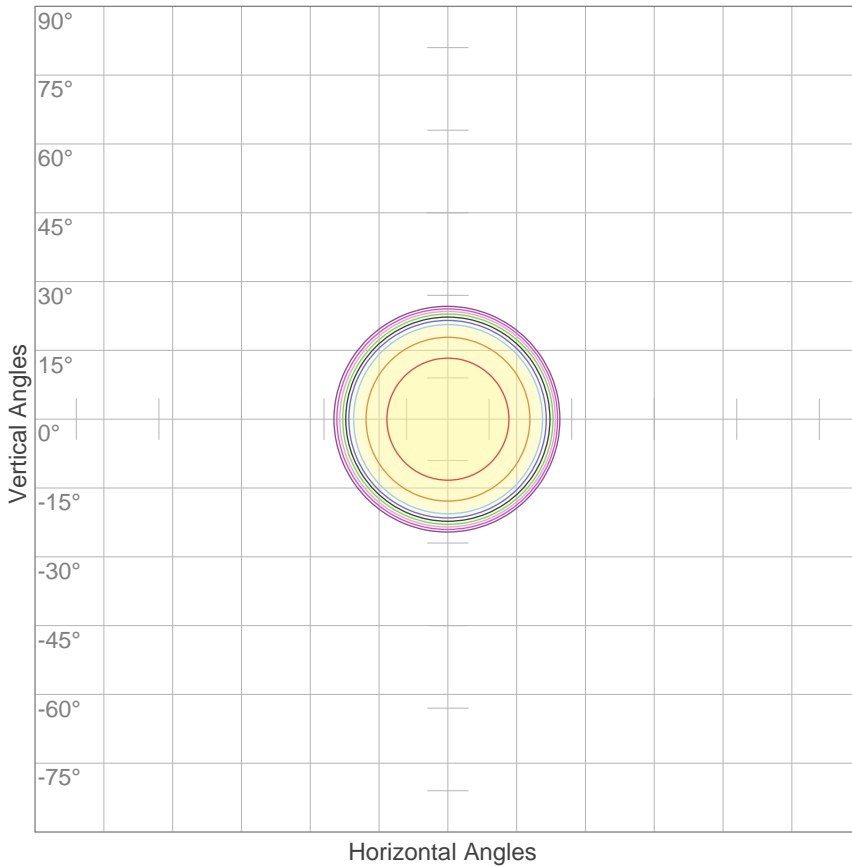
Beam Intensities from 1-20m

m	1	2	3	4	5	6	7	8	9	10	11	12	13	14	15	16	17	18	19	20
ft	3.3	6.6	9.8	13.1	16.4	19.7	23	26.2	29.5	32.8	36.1	39.4	42.7	45.9	49.2	52.5	55.8	59.1	62.3	65.6
lx	42699	10675	4744	2669	1708	1186	871	667	527	427	353	297	253	218	190	167	148	132	118	107
fc	3966.8	991.7	440.8	247.9	158.7	110.2	81	62	49	39.7	32.8	27.5	23.5	20.2	17.6	15.5	13.7	12.2	11	9.9

Beam Angle 50%	Field Angle 10%	Cutoff Angle 2,5%	Intensity Ratio in 120° Cone	Intensity Ratio in 90° Cone
49.4°	54.7°	55.7°	98.8%	98.8%

ISO Diagrams

ISO Candela Diagram



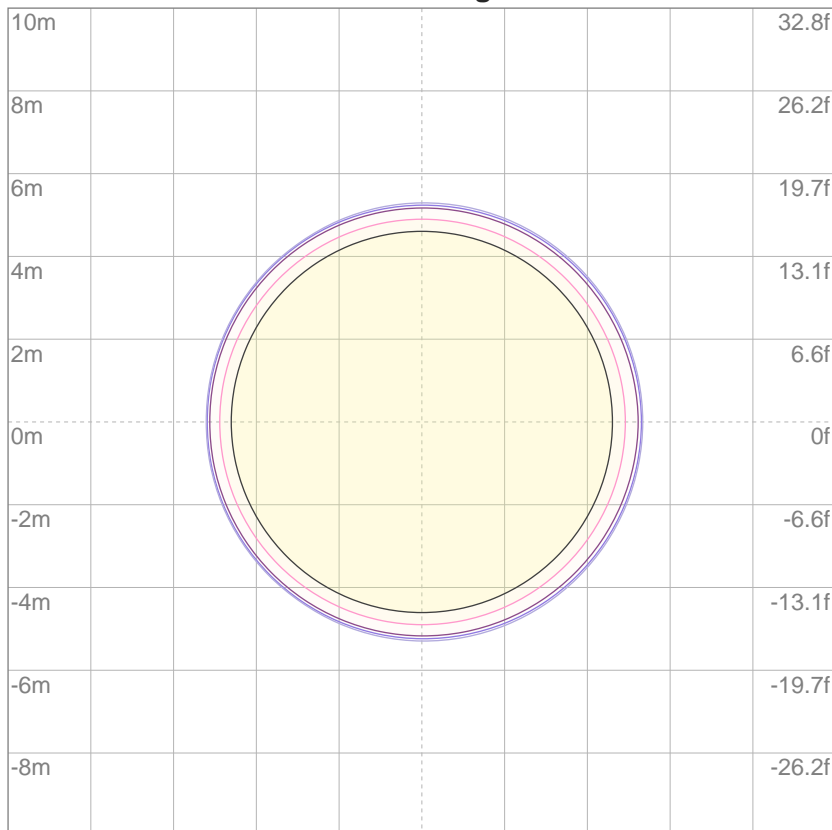
10%	4270 cd
20%	8540 cd
30%	12810 cd
40%	17080 cd
50%	21349 cd
60%	25619 cd
70%	29889 cd
80%	34159 cd
90%	38429 cd

Conditions:

Number of c-planes: 2

Candela at center: 42699 cd

ISO Lux Diagram



Mounting Height: 10 meters (33 feet)

3%	12.8 lx
5%	21.3 lx
10%	42.7 lx
30%	128 lx
50%	213 lx

Conditions:

Number of c-planes: 2

Lux at center: 427 lx

Lux distribution on a surface when lamp is mounted at 10 meters from the surface.